

The experience of the pandemic and the subsequent lockdowns was entirely new for many of us pro. It gave us a sense of the kind of social isolation that people from marginalised groups may routinely experience. So, how has this experience changed us? That is exactly what we are going to try to find out through the works of artist Jan Pfeiffer. He created them during the Covid 19 pandemic, or they followed on from this experience.

1)

Some titles of Jan Pfeiffer’s works begin with the word “transformation”. You may know the Transformers film series, or you may have seen the world somewhere else. In your own words, try to explain in writing what the word transformation means. What transformations do you know?

Think and write:

2)

Jan Pfeiffer’s objects, as well as his paintings, drawings, collages and videos show various things we know from everyday life, transformed into mysterious objects. A geometrical formation made of rulers and scissors, it resembles a colourful diamond, a jewel, but at the same time a tool or a machine from sci-fi films. How do you explain this object?

Think and write:

3)

When you hear the word “ruler” – what other words come to mind?

Write:

Norm: Rule, directive, standard; model, regulation, example; guiding principle; convention, regularity.

4)

What is a norm? First, try to explain it yourselves. Can a norm relate to a ruler?

Think and write:

Transformation: Reshaping, metamorphosis, change.

5)

Rulers do not appear only as tools for measures, measuring se and drawing. Artistically speaking, they are also interesting objects and that is why they have been used as motifs for works of art such as this cubist composition. Drawing on the back, try to create your own composition using rulers.

Draw:

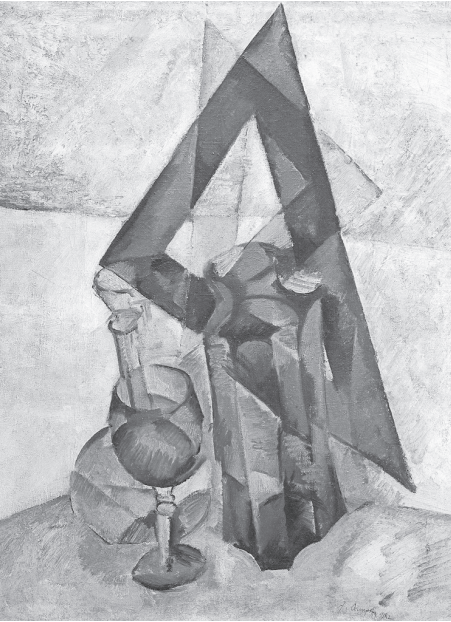
Cubism: Avantgarde art movement of the early 20th century depicting objects around us broken down in basic geometrical shapes, thus creating a new pictorial space.

6)

While you work, think about the way people’s interest in things they normally have at home changed during lockdowns. Do you find any similarity to Jan Pfeiffer’s artworks? Haven’t we all also undergone some sort of transformation during the period of pandemic lockdowns? What kind of? You can write the answers on the dotted lines or directly in your drawing:

Think and write:

Alexander Osmerkin – *Still life with a carafe* 1918. Photo: Aleš South Bohemian Gallery.



Space for your drawing

Transformation and the new norm

Worksheet accompanying Jan Pfeiffer's artwork



Jan Pfeiffer — *Transformation object*, 2020

© V. Fremlová, J. Pfeiffer, M. Raudenský



This project has received
funding from the European
Union's Horizon 2020
research and innovation
programme under grant
agreement nr. 870621.

AMASS
acting on the margins. arts as social sculpture

